

## Double Components Light Yellow PU Angle Glue for Door / Window Installation Quick-Drying Weatherproof Adhesive

Our Product Introduction

### Basic Information

- Place of Origin: China
- Brand Name: XuanQing
- Model Number: Cotoo 1
- Minimum Order Quantity: 500PCS
- Price: Negotiable
- Packaging Details: Carton Box
- Delivery Time: 10-15 work days
- Payment Terms: T/T
- Supply Ability: 3000000pcs/mon



### Product Specification

- Warranty: 1 Year
- After-sale Service: Online Technical Support, Onsite Training
- Project Solution Capability: Total Solution For Projects
- Application: Apartment, Door Window Manufacture
- Design Style: Traditional
- Type: Corner Angle Double Components Adhesives, Polyurethane Adhesive
- Product Name: Corner Angle Adhesive
- Usage: Construction
- Classification: Double Components Adhesives
- Function: Room Curing
- Morphology: Solvent Free
- Material: Polyurethane
- Characteristic: Waterproof
- Color: Light Yellow



### More Images



for more products please visit us on [aluminium-hardware.com](http://aluminium-hardware.com)

Product Description

Double Components Light Yellow PU Angle Glue for Door / Window Installation

Product Specifications

Attribute	Value
Warranty	1 Year
After-sale Service	Online Technical Support, Onsite Training
Project Solution Capability	Total Solution For Projects
Application	Apartment, Door Window Manufacture
Type	Corner Angle Double Components Adhesives, Polyurethane Adhesive
Material	Polyurethane
Characteristic	Waterproof
Color	Light Yellow

Product Description

Light Yellow PU Corner Angle Glue is a high-performance double-component adhesive specifically designed for bonding corners and angles of doors and windows. This polyurethane-based adhesive provides excellent bonding strength for various materials including metal, plastic, and composite profiles.

Key Features

- High bonding strength for structural integrity
- Rapid and stable curing process
- Resistant to moisture and temperature fluctuations
- Easy application for efficient installation
- Provides durable structural support
- Light yellow color for professional finish

Product Images

## TEST REPORT

No. : GZMR230400940201

Date : Apr 21, 2023

Page: 4 of 4



Equipment Information:

Equipment	Model	Equipment No.	Calibration date	Next Calibration date
Universal Testing Machine	Z030	GZMR-PL-E140	2022-06-21	2023-06-20

\*\*\*\*\* End of report\*\*\*\*\*

## TEST REPORT

No. : GZMR230400940201

Date : Apr 21, 2023

Page: 3 of 4

Test Item: Tensile Lap-Shear Strength

Sample Description: Adherend

Test Method: ISO 4587:2003

Test Condition:

Shear area:  $25.2 \times 14.3 \text{ mm}^2$

Testing speed: 9.0MPa/min

Number of specimens tested: 5

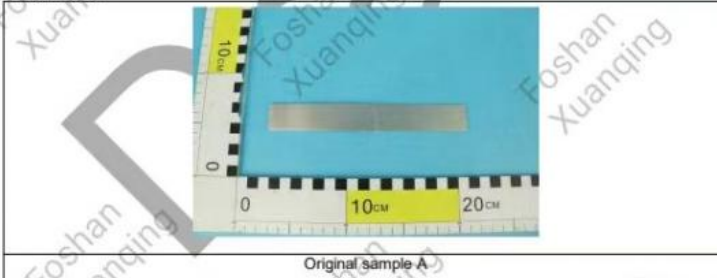
Lab Environmental Condition:  $23 \pm 2^\circ\text{C}$ ,  $50 \pm 5\%$  RH

Test Result:

Test Item	Test Result
Tensile Lap-Shear Strength	19.6MPa

Note: Failure mode: Cohesion failure.

Test Photo:



## TEST REPORT

No. : GZMR230400940201

Date : Apr 21, 2023

Page: 2 of 4

### Summary of Results:

No.	Test Item	Test Method	Result	Conclusion
1	Tensile Lap-Shear Strength	ISO 4587:2003	19.6MPa	/

### Note:

Pass : Meet the requirements;

Fail : Does not meet the requirements;

/ : Not Apply to the judgment.

## TEST REPORT

No. : GZMR230400940201  
Date : Apr 21, 2023  
Page: 1 of 4



CUSTOMER NAME: GUANGDONG LIWANG COMPOSITE TECHNOLOGY CO., LTD.  
ADDRESS: NO. 8 WEST NO. 2 INDUSTRIAL ROAD, MANFENG, SHATIAN,  
DONGGUAN, CHINA

Sample Name : LI WANG TWO-COMPONENT HORN ADHESIVE

Above information and sample(s) was/were submitted and confirmed by the client. SGS, however, assumes no responsibility to verify the accuracy, adequacy and completeness of the sample information provided by client.

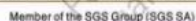
SGS Ref. No. : CP23-017432  
Date of Receipt : Apr 14, 2023  
Testing Start Date : Apr 14, 2023  
Testing End Date : Apr 21, 2023  
Test result(s) : For further details, please refer to the following page(s)  
(Unless otherwise stated the results shown in this test report refer only to the sample(s) tested)

Signed for  
SGS-CSTC Standards Technical  
Services Co., Ltd. Guangzhou Branch

Kelly Lee  
Authorized signatory



### Phthalates Testing Flow Chart







Unless otherwise stated, the decision rule for conformity reporting is based on Binary Statement for Simple Acceptance Rule ( $w=0$ ) stated in ILAC-G8:09/2019.

Member of the SGS Group (SGS SA)



No. SZXEC2202967905

Date: 06 Sep 2022

Page 2 of 6

Test Result(s) :

Test Part Description :

Specimen No.	SGS Sample ID	Description
SN1	SZX22-029679.003	A#Beige solid material + B#Beige solid material + C#Beige solid material

Remarks

- (1) 1 mg/kg = 1 ppm = 0.0001%  
(2) MDL = Method Detection Limit  
(3) ND = Not Detected ( < MDL )  
(4) "-" = Not Regulated

Lead, Mercury, Cadmium, Hexavalent chromium, Polybrominated biphenyls (PBBs), Polybrominated diphenyl ethers (PBDEs), Bis(2-ethylhexyl) phthalate (DEHP), Butyl benzyl phthalate (BBP), Dibutyl phthalate (DBP) and Diisobutyl phthalate (DIBP)

**Test Method:** With reference to IEC 62321-4:2013+AMD1:2017, IEC62321-5:2013, IEC62321-7-2:2017, IEC 62321-6:2015 and IEC62321-8:2017, analyzed by ICP-OES, UV-Vis and GC-MS.

Test Item(s)	Limit	Unit	MDL	003
Cadmium (Cd)	100	mg/kg	2	ND
Lead (Pb)	1,000	mg/kg	2	ND
Mercury (Hg)	1,000	mg/kg	2	ND
Hexavalent Chromium (Cr(VI))	1,000	mg/kg	8	ND
Sum of PBBs	1,000	mg/kg	-	ND
Monobromobiphenyl	-	mg/kg	5	ND
Dibromobiphenyl	-	mg/kg	5	ND
Tribromobiphenyl	-	mg/kg	5	ND
Tetrabromobiphenyl	-	mg/kg	5	ND
Pentabromobiphenyl	-	mg/kg	5	ND
Hexabromobiphenyl	-	mg/kg	5	ND
Heptabromobiphenyl	-	mg/kg	5	ND
Octabromobiphenyl	-	mg/kg	5	ND
Nonabromobiphenyl	-	mg/kg	5	ND
Decabromobiphenyl	-	mg/kg	5	ND
Sum of PBDEs	1,000	mg/kg	-	ND
Monobromodiphenyl ether	-	mg/kg	5	ND
Dibromodiphenyl ether	-	mg/kg	5	ND
Tribromodiphenyl ether	-	mg/kg	5	ND



Unless otherwise agreed in writing, this document is issued by the Company subject to its General Conditions of Service printed on the reverse side of this document. If the document is not available on request or accessible at <http://www.ssg.com/terms-and-conditions> or for electronic format documents, subject to Terms and Conditions for Electronic Documents at <http://www.ssg.com/terms-and-conditions/Terms-e-Documents.aspx>. Attention is drawn to the limitation of liability, indemnification and jurisdiction issues defined therein. Any holder of this document is advised that information contained herein reflects the Company's findings at the time of its intervention only and within the limits of the Client's instructions, if any. The Company's sole responsibility is to its Client and this document does not exonerate parties to the dispute. This document is intended to be read in conjunction with the Client's instructions. Any use of this document, in whole or in part, without prior written approval of the Company, any unauthorized alteration, forgery or falsification of the content or appearance of this document is unlawful and offenders may be prosecuted to the fullest extent of the law. Unless otherwise stated the

Attention: To check the authenticity of testing inspection report & certificate, please contact us at telephone: 051-251317140

SGS-CHEMIE Technik GmbH Co., Ltd.  
Shanghai Branch

1. 100-000, Part 14 Room 101, Part 16 Room 101-02, Part 18, Jinan Center (Jinan) 100-000, No. 48, Jinan Center, Jinan Community, Jinan Road, Langyuan District, Shandong, Guangdong, China 510625 www.apagroup.com  
 2. 中国广东省广州市天河区珠江新城华夏路40号富力中心（中国）主楼1001室 100-000, No. 48, Jinan Center, Jinan Community, Jinan Road, Langyuan District, Shandong, Guangdong, China 510625 100-000, No. 48, Jinan Center, Jinan Community, Jinan Road, Langyuan District, Shandong, Guangdong, China 510625

Member of the SGS Group (SGS SA)

Standard packaging includes 10 pairs per box. Custom packaging options available to meet specific customer requirements.



#### About Foshan Xuanqing Door and Window Accessories Co., Ltd.

We are a specialized manufacturer of door and window accessories with over ten years of experience in the industry. Our product range includes various types of corner codes, anti-fall devices, hinges, and curtain wall pendants. With more than twenty patented products, we provide comprehensive solutions including mold customization and one-stop project support.

Our company philosophy emphasizes integrity management and win-win cooperation, with products meeting national standards and exported to European and American markets.





## SOME HONORS



宣清智连科技  
Xuanqing Zhilian Technology

Foshan Xuanqing Zhilian Technology Co., LTD



+8613827792344



fsxuanqing@gmail.com



aluminium-hardware.com

Guangdong Foshan Nanhai No. 5-1, Songgang Lianbiao Industrial Zone, Shishan Town