

## Light Yellow PU Corner Angle Glue for Doors & Windows Double Components Adhesive with High Bonding Strength

Our Product Introduction

for more products please visit us on [aluminium-hardware.com](http://aluminium-hardware.com)

### Basic Information

- Place of Origin: China
- Brand Name: XuanQing
- Model Number: Cotoo 1
- Minimum Order Quantity: 500PCS
- Price: Negotiable
- Packaging Details: Carton Box
- Delivery Time: 10-15 work days
- Payment Terms: T/T
- Supply Ability: 3000000pcs/mon



### Product Specification

- Warranty: 1 Year
- After-sale Service: Online Technical Support, Onsite Training
- Project Solution Capability: Total Solution For Projects
- Application: Apartment, Door Window Manufacture
- Design Style: Traditional
- Type: Corner Angle Double Components Adhesives, Polyurethane Adhesive
- Product Name: Corner Angle Adhesive
- Usage: Construction
- Classification: Double Components Adhesives
- Function: Room Curing
- Morphology: Solvent Free
- Material: Polyurethane
- Characteristic: Waterproof
- Color: Light Yellow



### More Images



### Product Description

Light Yellow PU Corner Angle Glue for Doors & Windows

Double Components Adhesive with High Bonding Strength

Our Product

Product Attributes

Attribute	Value
Warranty	1 Year
After-sale Service	Online Technical Support, Onsite Training
Project Solution Capability	Total Solution For Projects
Application	Apartment, Door Window Manufacture
Design Style	Traditional
Type	Corner Angle Double Components Adhesives, Polyurethane Adhesive
Product Name	Corner Angle Adhesive
Usage	Construction
Classification	Double Components Adhesives
Function	Room Curing
Morphology	Solvent Free
Material	Polyurethane
Characteristic	Waterproof
Color	Light Yellow

Light Yellow PU Corner Angle Glue for Doors & Windows is a high-performance double-component adhesive designed specifically for bonding corners and angles of doors and windows. Crafted from polyurethane (PU) material, this light yellow glue offers excellent bonding strength to securely join various materials commonly used in door and window fabrication.

Key Features

- High bonding strength for secure joints
- Two-component formula ensures rapid and stable curing
- Provides reliable structural support and durability
- Resistant to moisture and temperature fluctuations
- Easy application for efficient installation
- Maintains a neat, professional finish

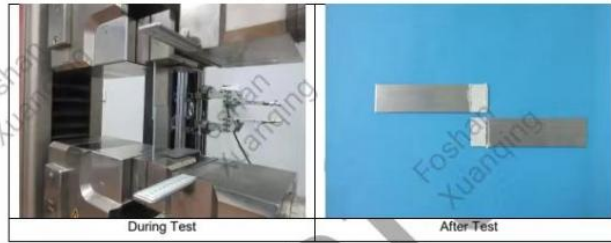
Test Report Images

## TEST REPORT

No.: GZMR230400940201

Date: Apr 21, 2023

Page: 4 of 4



Equipment Information:

Equipment	Model	Equipment No.	Calibration date	Next Calibration date
Universal Testing Machine	Z030	GZMR-PL-E140	2022-06-21	2023-06-20

\*\*\*\*\* End of report\*\*\*\*\*

## TEST REPORT

No.: GZMR230400940201

Date: Apr 21, 2023

Page: 3 of 4

Test Item: Tensile Lap-Shear Strength

Sample Description: Adherend

Test Method: ISO 4587:2003

Test Condition:

Shear area:  $25.2 \times 14.3 \text{ mm}^2$

Testing speed: 9.0MPa/min

Number of specimens tested: 5

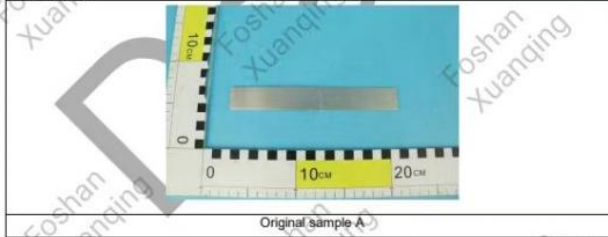
Lab Environmental Condition:  $23 \pm 2^\circ\text{C}$ ,  $50 \pm 5\% \text{ RH}$

Test Result:

Test Item	Test Result
Tensile Lap-Shear Strength	19.6MPa

Note: Failure mode: Cohesion failure.

Test Photo:



Original sample A

## TEST REPORT

No. : GZMR230400940201

Date : Apr 21, 2023

Page: 2 of 4

### Summary of Results:

No.	Test Item	Test Method	Result	Conclusion
1	Tensile Lap-Shear Strength	ISO 4587:2003	19.6MPa	/

Note:

Pass : Meet the requirements;

Fail : Does not meet the requirements;

/ : Not Apply to the judgment.

## TEST REPORT

No. : GZMR230400940201

Date : Apr 21, 2023

Page: 1 of 4



CUSTOMER NAME: GUANGDONG LIWANG COMPOSITE TECHNOLOGY CO., LTD.  
ADDRESS: NO. 8 WEST NO. 2 INDUSTRIAL ROAD, MANFENG, SHATIAN,  
DONGGUAN, CHINA

Sample Name : LI WANG TWO-COMPONENT HORN ADHESIVE

Above information and sample(s) was/were submitted and confirmed by the client. SGS, however, assumes no responsibility to verify the accuracy, adequacy and completeness of the sample information provided by client.

SGS Ref. No. : CP23-017432

Date of Receipt : Apr 14, 2023

Testing Start Date : Apr 14, 2023

Testing End Date : Apr 21, 2023

Test result(s) : For further details, please refer to the following page(s)  
(Unless otherwise stated the results shown in this test report refer only to the sample(s) tested)

Signed for  
SGS-CSTC Standards Technical  
Services Co., Ltd, Guangzhou Branch

Kelly Lee  
Authorized signatory



Test Report

No. SZXEC2202967905

Date: 06 Sep 2022

Page 6 of 6

Sample photo:



SGS authenticates the photo on original report only

\*\*\* End of Report \*\*\*



Unless otherwise agreed in writing, this document is issued by the Company subject to its General Conditions of Service printed overleaf, available on request or accessible at <http://www.sgs.com/sgs/Terms-and-Conditions.aspx> and, for electronic format documents, subject to Terms and Conditions for Electronic Documents at <http://www.sgs.com/sgs/Terms-and-Conditions/Terms-and-Conditions.aspx>. Attached is drawn to the limitation of liability, indemnification and jurisdiction issues defined therein. Any holder of this document is advised that information contained herein reflects the Company's findings at the time of its intervention only and within the limits of Client's instructions, if any. The Company's sole responsibility is to its Client and this document does not exonerate parties to a transaction from assuming all their rights and obligations under the transaction documents. This document cannot be reproduced or altered in full without prior written approval of the Company. Any unauthorized alteration, forgery or falsification of the content or appearance of this document is unlawful and offenders may be prosecuted to the fullest extent of the law. Unless otherwise stated the results shown in this test report refer only to the sample(s) tested.

Attention: To check the authenticity of issuing inspection report & certificate, please contact us at telephone: +86-21-5352-1614 or email: [CH.Director@sgs.com](mailto:CH.Director@sgs.com)

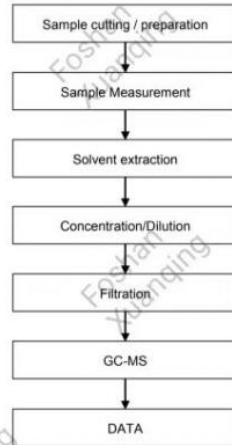
Singapore: 100 Robinson Road, #10-01, Singapore 068902. Tel: +65 6349 4111. Fax: +65 6349 4112. Email: [sgs@sgs.com.sg](mailto:sgs@sgs.com.sg)

China: 110000, Beijing, China. Tel: +86 10 5680 1111. Fax: +86 10 5680 1112. Email: [sgs@sgs.com.cn](mailto:sgs@sgs.com.cn)

Member of the SGS Group (SGS SA)

## ATTACHMENTS

### Phthalates Testing Flow Chart



Unless otherwise agreed in writing, this document is issued by the Company subject to its General Conditions of Service printed overleaf, available on request or accessible at <http://www.spa.com/terms-and-conditions.aspx> and, for electronic formal documents, subject to Terms and Conditions for Electronic Documents at <http://www.spa.com/terms-and-conditions/terms-and-conditions.aspx>. The Company does not warrant the accuracy or completeness of the information contained herein and the Company's findings at the time of its intervention only and within the limits of the Client's instructions, if any. The Company's sole responsibility is to the Client and this document does not exonerate parties to a contract from their obligations. The Company's findings are not intended to be used for any purpose other than that for which they were prepared, except in full, without prior written approval of the Company. Any unauthorized alteration, forgery or falsification of the content or appearance of this document is unlawful and offenders may be prosecuted to the fullest extent of the law. Unless otherwise stated the Client agrees to track back responsibility of forgery, falsification or alteration to the Client. Attention is drawn to the fact that responsibility of forgery, falsification or alteration is not transferred to the Client by the use of the word "Attention".

Attention: To check the authenticity of testing inspection report & certificate, please contact us at telephone: 011-785-83071423, or email: CN.Dockcheck@agaport.com

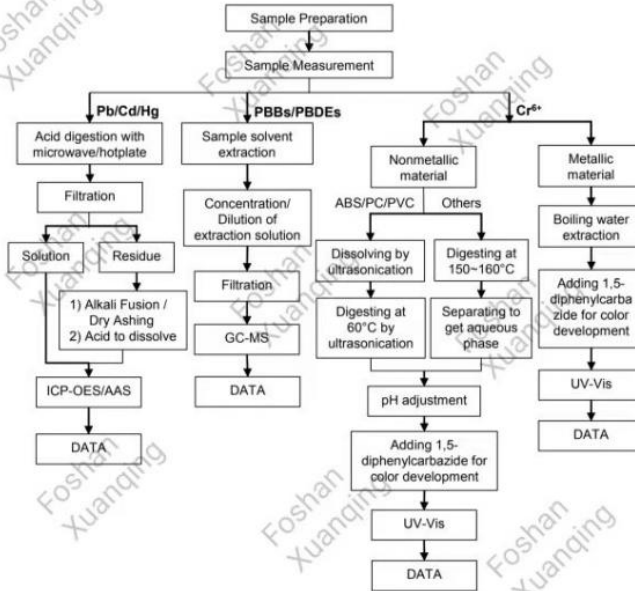
Member of the SGS Group (SGS SA)



## ATTACHMENTS

### Pb/Cd/Hg/Cr<sup>6+</sup>/PBBs/PBDEs Testing Flow Chart

1) These samples were dissolved totally by pre-conditioning method according to below flow chart.  
(Cr<sup>6+</sup> and PBBs/PBDEs test method excluded).



Unless otherwise agreed in writing, this document is issued by the Company subject to its General Conditions of Service printed overleaf available on request or accessible at <http://www.sgs.com/term-and-conditions> and, for electronic format documents, subject to Terms and Conditions for Electronic Documents at <http://www.sgs.com/term-and-conditions/term-and-conditions-electronic>. Attention is drawn to the limitation of liability, indemnification and jurisdiction issues defined therein. Any holder of this document is advised that information contained herein reflects the Company's findings at the time of its intervention only and within the limits of Client's instructions, if any. The Company's sole responsibility is to its Client and this document does not exonerate parties to a transaction from assuming all their rights and obligations under the transaction documents. This document cannot be reproduced, stored in a retrieval system, or transmitted in any form or by any means, electronic, mechanical, photocopying, recording, or by any information storage and retrieval system, without prior written approval of the Company. Any unauthorized alteration, forgery or falsification of the content or appearance of this document is unlawful and offenders may be prosecuted to the fullest extent of the law. Unless otherwise stated the results shown in this test report refer only to the sample(s) tested.

Attention: To check the authenticity of testing inspection report & certificate, please contact us at telephone: 86-21-5359-1648 or e-mail: [CS@china.sgs.com](mailto:CS@china.sgs.com)

SZS-CZ: 0200, 020000, 020001, 020002, 020003, 020004, 020005, 020006, 020007, 020008, 020009, 020010, 020011, 020012, 020013, 020014, 020015, 020016, 020017, 020018, 020019, 020020, 020021, 020022, 020023, 020024, 020025, 020026, 020027, 020028, 020029, 020030, 020031, 020032, 020033, 020034, 020035, 020036, 020037, 020038, 020039, 020040, 020041, 020042, 020043, 020044, 020045, 020046, 020047, 020048, 020049, 020050, 020051, 020052, 020053, 020054, 020055, 020056, 020057, 020058, 020059, 020060, 020061, 020062, 020063, 020064, 020065, 020066, 020067, 020068, 020069, 020070, 020071, 020072, 020073, 020074, 020075, 020076, 020077, 020078, 020079, 020080, 020081, 020082, 020083, 020084, 020085, 020086, 020087, 020088, 020089, 020090, 020091, 020092, 020093, 020094, 020095, 020096, 020097, 020098, 020099, 020100, 020101, 020102, 020103, 020104, 020105, 020106, 020107, 020108, 020109, 020110, 020111, 020112, 020113, 020114, 020115, 020116, 020117, 020118, 020119, 020120, 020121, 020122, 020123, 020124, 020125, 020126, 020127, 020128, 020129, 020130, 020131, 020132, 020133, 020134, 020135, 020136, 020137, 020138, 020139, 020140, 020141, 020142, 020143, 020144, 020145, 020146, 020147, 020148, 020149, 020150, 020151, 020152, 020153, 020154, 020155, 020156, 020157, 020158, 020159, 020160, 020161, 020162, 020163, 020164, 020165, 020166, 020167, 020168, 020169, 020170, 020171, 020172, 020173, 020174, 020175, 020176, 020177, 020178, 020179, 020180, 020181, 020182, 020183, 020184, 020185, 020186, 020187, 020188, 020189, 020190, 020191, 020192, 020193, 020194, 020195, 020196, 020197, 020198, 020199, 020200, 020201, 020202, 020203, 020204, 020205, 020206, 020207, 020208, 020209, 020210, 020211, 020212, 020213, 020214, 020215, 020216, 020217, 020218, 020219, 020220, 020221, 020222, 020223, 020224, 020225, 020226, 020227, 020228, 020229, 020230, 020231, 020232, 020233, 020234, 020235, 020236, 020237, 020238, 020239, 020240, 020241, 020242, 020243, 020244, 020245, 020246, 020247, 020248, 020249, 020250, 020251, 020252, 020253, 020254, 020255, 020256, 020257, 020258, 020259, 020260, 020261, 020262, 020263, 020264, 020265, 020266, 020267, 020268, 020269, 020270, 020271, 020272, 020273, 020274, 020275, 020276, 020277, 020278, 020279, 020280, 020281, 020282, 020283, 020284, 020285, 020286, 020287, 020288, 020289, 020290, 020291, 020292, 020293, 020294, 020295, 020296, 020297, 020298, 020299, 020300, 020301, 020302, 020303, 020304, 020305, 020306, 020307, 020308, 020309, 020310, 020311, 020312, 020313, 020314, 020315, 020316, 020317, 020318, 020319, 020320, 020321, 020322, 020323, 020324, 020325, 020326, 020327, 020328, 020329, 020330, 020331, 020332, 020333, 020334, 020335, 020336, 020337, 020338, 020339, 020340, 020341, 020342, 020343, 020344, 020345, 020346, 020347, 020348, 020349, 020350, 020351, 020352, 020353, 020354, 020355, 020356, 020357, 020358, 020359, 020360, 020361, 020362, 020363, 020364, 020365, 020366, 020367, 020368, 020369, 020370, 020371, 020372, 020373, 020374, 020375, 020376, 020377, 020378, 020379, 020380, 020381, 020382, 020383, 020384, 020385, 020386, 020387, 020388, 020389, 020390, 020391, 020392, 020393, 020394, 020395, 020396, 020397, 020398, 020399, 020400, 020401, 020402, 020403, 020404, 020405, 020406, 020407, 020408, 020409, 020410, 020411, 020412, 020413, 020414, 020415, 020416, 020417, 020418, 020419, 020420, 020421, 020422, 020423, 020424, 020425, 020426, 020427, 020428, 020429, 020430, 020431, 020432, 020433, 020434, 020435, 020436, 020437, 020438, 020439, 020440, 020441, 020442, 020443, 020444, 020445, 020446, 020447, 020448, 020449, 020450, 020451, 020452, 020453, 020454, 020455, 020456, 020457, 020458, 020459, 020460, 020461, 020462, 020463, 020464, 020465, 020466, 020467, 020468, 020469, 020470, 020471, 020472, 020473, 020474, 020475, 020476, 020477, 020478, 020479, 020480, 020481, 020482, 020483, 020484, 020485, 020486, 020487, 020488, 020489, 020490, 020491, 020492, 020493, 020494, 020495, 020496, 020497, 020498, 020499, 020500, 020501, 020502, 020503, 020504, 020505, 020506, 020507, 020508, 020509, 020510, 020511, 020512, 020513, 020514, 020515, 020516, 020517, 020518, 020519, 020520, 020521, 020522, 020523, 020524, 020525, 020526, 020527, 020528, 020529, 020530, 020531, 020532, 020533, 020534, 020535, 020536, 020537, 020538, 020539, 020540, 020541, 020542, 020543, 020544, 020545, 020546, 020547, 020548, 020549, 020550, 020551, 020552, 020553, 020554, 020555, 020556, 020557, 020558, 020559, 020560, 020561, 020562, 020563, 020564, 020565, 020566, 020567, 020568, 020569, 020570, 020571, 020572, 020573, 020574, 020575, 020576, 020577, 020578, 020579, 020580, 020581, 020582, 020583, 020584, 020585, 020586, 020587, 020588, 020589, 020590, 020591, 020592, 020593, 020594, 020595, 020596, 020597, 020598, 020599, 020600, 020601, 020602, 020603, 020604, 020605, 020606, 020607, 020608, 020609, 020610, 020611, 020612, 020613, 020614, 020615, 020616, 020617, 020618, 020619, 020620, 020621, 020622, 020623, 020624, 020625, 020626, 020627, 020628, 020629, 020630, 020631, 020632, 020633, 020634, 020635, 020636, 020637, 020638, 020639, 020640, 020641, 020642, 020643, 020644, 020645, 020646, 020647, 020648, 020649, 020650, 020651, 020652, 020653, 020654, 020655, 020656, 020657, 020658, 020659, 020660, 020661, 020662, 020663, 020664, 020665, 020666, 020667, 020668, 020669, 020670, 020671, 020672, 020673, 020674, 020675, 020676, 020677, 020678, 020679, 020680, 020681, 020682, 020683, 020684, 020685, 020686, 020687, 020688, 020689, 020690, 020691, 020692, 020693, 020694, 020695, 020696, 020697, 020698, 020699, 020700, 020701, 020702, 020703, 020704, 020705, 020706, 020707, 020708, 020709, 020710, 020711, 020712, 020713, 020714, 020715, 020716, 020717, 020718, 020719, 020720, 020721, 020722, 020723, 020724, 020725, 020726, 020727, 020728, 020729, 020730, 020731, 020732, 020733, 020734, 020735, 020736, 020737, 020738, 020739, 020740, 020741, 020742, 020743, 020744, 020745, 020746, 020747, 020748, 020749, 020750, 020751, 020752, 020753, 020754, 020755, 020756, 020757, 020758, 020759, 020760, 020761, 020762, 020763, 020764, 020765, 020766, 020767, 020768, 020769, 020770, 020771, 020772, 020773, 020774, 020775, 020776, 020777, 020778, 020779, 020780, 020781, 020782, 020783, 020784, 020785, 020786, 020787, 020788, 020789, 020790, 020791, 020792, 020793, 020794, 020795, 020796, 020797, 020798, 020799, 020800, 020801, 020802, 020803, 020804, 020805, 020806, 020807, 020808, 020809, 020810, 020811, 020812, 020813, 020814, 020815, 020816, 020817, 020818, 020819, 020820, 020821, 020822, 020823, 020824, 020825, 020826, 020827, 020828, 020829, 020830, 020831, 020832, 020833, 020834, 020835, 020836, 020837, 020838, 020839, 020840, 020841, 020842, 020843, 020844, 020845, 020846, 020847, 020848, 020849, 020850, 020851, 020852, 020853, 020854, 020855, 020856, 020857, 020858, 020859, 020860, 020861, 020862, 020863, 020864, 020865, 020866, 020867, 020868, 020869, 020870, 020871, 020872, 020873, 020874, 020875, 020876, 020877, 020878, 020879, 020880, 020881, 020882, 020883, 020884, 020885, 020886, 020887, 020888, 020889, 020890, 020891, 020892, 020893, 020894, 020895, 020896, 020897, 020898, 020899, 020900, 020901, 020902, 020903, 020904, 020905, 020906, 020907, 020908, 020909, 020910, 020911, 020912, 020913, 020914, 020915, 020916, 020917, 020918, 020919, 020920, 020921, 020922, 020923, 020924, 020925, 020926, 020927, 020928, 020929, 020930, 020931, 020932, 020933, 020934, 020935, 020936, 020937, 020938, 020939, 020940, 020941, 020942, 020943, 020944, 020945, 020946, 020947, 020948, 020949, 020950, 020951, 020952, 020953, 020954, 020955, 020956, 020957, 020958, 020959, 020960, 020961, 020962, 020963, 020964, 020965, 020966, 020967, 020968, 020969, 020970, 020971, 020972, 020973, 020974, 020975, 020976, 020977, 020978, 020979, 020980, 020981, 020982, 020983, 020984, 020985, 020986, 020987, 020988, 020989, 020990, 020991, 020992, 020993, 020994, 020995, 020996, 020997, 020998, 020999, 021000, 021001, 021002, 021003, 021004, 021005, 021006, 021007, 021008, 021009, 021010, 021011, 021012, 021013, 021014, 021015, 021016, 021017, 021018, 021019, 021020, 021021, 021022, 021023, 021024, 021025, 021026, 021027, 021028, 021029, 021030, 021031, 021032, 021033, 021034, 021035, 021036, 021037, 021038, 021039, 021040, 021041, 021042, 021043, 021044, 021045, 021046, 021047, 021048, 021049, 021050, 021051, 021052, 021053, 021054, 021055, 021056, 021057, 021058, 021059, 021060, 021061, 021062, 021063, 021064, 021065, 021066, 021067, 021068, 021069, 021070, 021071, 021072, 021073, 021074, 021075, 021076, 021077, 021078, 021079, 021080, 021081, 021082, 021083, 021084, 021085, 021086, 021087, 021088, 021089, 021090, 021091, 021092, 021093, 021094, 021095, 021096, 021097, 021098, 021099, 021100, 021101, 021102, 021103, 021104, 021105, 021106, 021107, 021108, 021109, 021110, 021111, 021112, 021113, 021114, 021115, 021116, 021117, 021118, 021119, 021120, 021121, 021122, 021123, 021124, 021125, 021126, 021127, 021128, 021129, 021130, 021131, 021132, 021133, 021134, 021135, 021136, 021137, 021138, 021139, 021140, 021141, 021142, 021143, 021144, 021145, 021146, 021147, 021148, 021149, 021150, 021151, 021152, 021153, 021154, 021155, 021156, 021157, 021158, 021159, 021160, 021161, 021162, 021163, 021164, 021165, 021166, 021167, 021168, 021169, 021170, 021171, 021172, 021173, 021174, 021175, 021176, 021177, 021178, 021179, 021180, 021181, 021182, 021183, 021184, 021185, 021186, 021187, 021188, 021189, 021190, 021191, 021192, 021193, 021194, 021195, 021196, 021197, 021198, 021199, 021200, 021201, 021202, 021203, 021204, 021205, 021206, 021207, 021208, 021209, 021210, 021211, 021212, 021213, 021214, 021215, 021216, 021217, 021218, 021219, 021220, 021221, 021222, 021223, 021224, 021225, 021226, 021227, 021228, 021229, 021230, 021231, 021232, 021233, 021234, 021235, 021236, 021237, 021238, 021239, 021240, 021241, 021242, 021243, 021244, 021245, 021246, 021247, 021248, 021249, 021250, 021251, 021252, 021253, 021254, 021255, 021256, 021257, 021258, 021259, 021260, 021261, 021262, 021263, 021264, 021265, 021266, 021267, 021268, 021269, 021270, 021271, 021272, 021273, 021274, 021275, 021276, 021277, 021278, 021279, 021280, 021281, 021282, 021283, 021284, 021285, 021286, 021287, 021288, 021289, 021290, 021291, 021292, 021293, 021294, 021295, 021296, 021297, 021298, 021299, 021300, 021301, 021302, 021303, 021304, 021305, 021306, 021307, 021308, 021309, 021310, 021311, 021312, 021313, 021314, 021315, 021316, 021317, 021318, 021319, 021320, 021321, 021322, 021323, 021324, 021325, 021326, 021327, 021328, 021329, 021330, 021331, 021332, 021333, 021334, 021335, 021336, 021337, 021338, 021339, 021340, 021341, 021342, 021343, 0



## Test Report

No. SZXEC2202967905

Date: 06 Sep 2022

Page 3 of 6

Test Item(s)	Limit	Unit	MDL	003
Tetrabromodiphenyl ether	-	mg/kg	5	ND
Pentabromodiphenyl ether	-	mg/kg	5	ND
Hexabromodiphenyl ether	-	mg/kg	5	ND
Heptabromodiphenyl ether	-	mg/kg	5	ND
Octabromodiphenyl ether	-	mg/kg	5	ND
Nonabromodiphenyl ether	-	mg/kg	5	ND
Decabromodiphenyl ether	-	mg/kg	5	ND
Dibutyl Phthalate (DBP)	1000	mg/kg	50	ND
Butyl benzyl Phthalate (BBP)	1000	mg/kg	50	ND
Bis(2-ethylhexyl) Phthalate (DEHP)	1000	mg/kg	50	ND
Diisobutyl Phthalate (DIBP)	1000	mg/kg	50	ND

Remark1: The sample(s) was/were analyzed on behalf of the applicant as mixing sample in one testing. The above result(s) was/were only given as the informality value and only for reference.

Remark2: The limit(s) was/were submitted by applicant.

Unless otherwise stated, the decision rule for conformity reporting is based on Binary Statement for Simple Acceptance Rule ( $w=0$ ) stated in ILAC-G8:09/2019.



Unless otherwise agreed in writing, this document is issued by the Company subject to its General Conditions of Service printed overleaf, available on request or accessible at <http://www.sgs.com/zh/terms-and-conditions.aspx> and, for electronic format documents, subject to Terms and Conditions for Electronic Documents at <http://www.sgs.com/zh/terms-and-conditions/terms-e-document.aspx>. Attached is drawn to the limitation of liability, indemnification and jurisdiction issues defined therein. Any holder of this document is advised that information contained herein reflects the Company's findings at the time of its intervention only and within the limits of Client's instructions, if any. The Company's sole responsibility is to its Client and this document does not exonerate parties to a transaction from assuming all their rights and obligations under the transaction documents. This document cannot be reproduced, altered or falsified without prior written approval of the Company. Any unauthorized alteration, forgery or falsification of the content or appearance of this document is unlawful and offenders may be prosecuted to the fullest extent of the law. Unless otherwise stated the results shown in this test report refer only to the sample(s) tested.

Attention: To check the authenticity of testing inspection report & certificate, please contact us at telephone: 86-755-8332 1614, or email: [CS@china.sgs.com](mailto:CS@china.sgs.com)

SGS China (Shenzhen) Co., Ltd. | 1000101, 1000102, 1000103, 1000104, 1000105, 1000106, 1000107, 1000108, 1000109, 1000110, 1000111, 1000112, 1000113, 1000114, 1000115, 1000116, 1000117, 1000118, 1000119, 1000120, 1000121, 1000122, 1000123, 1000124, 1000125, 1000126, 1000127, 1000128, 1000129, 1000130, 1000131, 1000132, 1000133, 1000134, 1000135, 1000136, 1000137, 1000138, 1000139, 1000140, 1000141, 1000142, 1000143, 1000144, 1000145, 1000146, 1000147, 1000148, 1000149, 1000150, 1000151, 1000152, 1000153, 1000154, 1000155, 1000156, 1000157, 1000158, 1000159, 1000160, 1000161, 1000162, 1000163, 1000164, 1000165, 1000166, 1000167, 1000168, 1000169, 1000170, 1000171, 1000172, 1000173, 1000174, 1000175, 1000176, 1000177, 1000178, 1000179, 1000180, 1000181, 1000182, 1000183, 1000184, 1000185, 1000186, 1000187, 1000188, 1000189, 1000190, 1000191, 1000192, 1000193, 1000194, 1000195, 1000196, 1000197, 1000198, 1000199, 1000200, 1000201, 1000202, 1000203, 1000204, 1000205, 1000206, 1000207, 1000208, 1000209, 1000210, 1000211, 1000212, 1000213, 1000214, 1000215, 1000216, 1000217, 1000218, 1000219, 1000220, 1000221, 1000222, 1000223, 1000224, 1000225, 1000226, 1000227, 1000228, 1000229, 1000230, 1000231, 1000232, 1000233, 1000234, 1000235, 1000236, 1000237, 1000238, 1000239, 1000240, 1000241, 1000242, 1000243, 1000244, 1000245, 1000246, 1000247, 1000248, 1000249, 1000250, 1000251, 1000252, 1000253, 1000254, 1000255, 1000256, 1000257, 1000258, 1000259, 1000260, 1000261, 1000262, 1000263, 1000264, 1000265, 1000266, 1000267, 1000268, 1000269, 1000270, 1000271, 1000272, 1000273, 1000274, 1000275, 1000276, 1000277, 1000278, 1000279, 1000280, 1000281, 1000282, 1000283, 1000284, 1000285, 1000286, 1000287, 1000288, 1000289, 1000290, 1000291, 1000292, 1000293, 1000294, 1000295, 1000296, 1000297, 1000298, 1000299, 1000300, 1000301, 1000302, 1000303, 1000304, 1000305, 1000306, 1000307, 1000308, 1000309, 1000310, 1000311, 1000312, 1000313, 1000314, 1000315, 1000316, 1000317, 1000318, 1000319, 1000320, 1000321, 1000322, 1000323, 1000324, 1000325, 1000326, 1000327, 1000328, 1000329, 1000330, 1000331, 1000332, 1000333, 1000334, 1000335, 1000336, 1000337, 1000338, 1000339, 1000340, 1000341, 1000342, 1000343, 1000344, 1000345, 1000346, 1000347, 1000348, 1000349, 1000350, 1000351, 1000352, 1000353, 1000354, 1000355, 1000356, 1000357, 1000358, 1000359, 1000360, 1000361, 1000362, 1000363, 1000364, 1000365, 1000366, 1000367, 1000368, 1000369, 1000370, 1000371, 1000372, 1000373, 1000374, 1000375, 1000376, 1000377, 1000378, 1000379, 1000380, 1000381, 1000382, 1000383, 1000384, 1000385, 1000386, 1000387, 1000388, 1000389, 1000390, 1000391, 1000392, 1000393, 1000394, 1000395, 1000396, 1000397, 1000398, 1000399, 1000400, 1000401, 1000402, 1000403, 1000404, 1000405, 1000406, 1000407, 1000408, 1000409, 1000410, 1000411, 1000412, 1000413, 1000414, 1000415, 1000416, 1000417, 1000418, 1000419, 1000420, 1000421, 1000422, 1000423, 1000424, 1000425, 1000426, 1000427, 1000428, 1000429, 1000430, 1000431, 1000432, 1000433, 1000434, 1000435, 1000436, 1000437, 1000438, 1000439, 1000440, 1000441, 1000442, 1000443, 1000444, 1000445, 1000446, 1000447, 1000448, 1000449, 1000450, 1000451, 1000452, 1000453, 1000454, 1000455, 1000456, 1000457, 1000458, 1000459, 1000460, 1000461, 1000462, 1000463, 1000464, 1000465, 1000466, 1000467, 1000468, 1000469, 1000470, 1000471, 1000472, 1000473, 1000474, 1000475, 1000476, 1000477, 1000478, 1000479, 1000480, 1000481, 1000482, 1000483, 1000484, 1000485, 1000486, 1000487, 1000488, 1000489, 1000490, 1000491, 1000492, 1000493, 1000494, 1000495, 1000496, 1000497, 1000498, 1000499, 1000500, 1000501, 1000502, 1000503, 1000504, 1000505, 1000506, 1000507, 1000508, 1000509, 1000510, 1000511, 1000512, 1000513, 1000514, 1000515, 1000516, 1000517, 1000518, 1000519, 1000520, 1000521, 1000522, 1000523, 1000524, 1000525, 1000526, 1000527, 1000528, 1000529, 1000530, 1000531, 1000532, 1000533, 1000534, 1000535, 1000536, 1000537, 1000538, 1000539, 1000540, 1000541, 1000542, 1000543, 1000544, 1000545, 1000546, 1000547, 1000548, 1000549, 1000550, 1000551, 1000552, 1000553, 1000554, 1000555, 1000556, 1000557, 1000558, 1000559, 1000560, 1000561, 1000562, 1000563, 1000564, 1000565, 1000566, 1000567, 1000568, 1000569, 1000570, 1000571, 1000572, 1000573, 1000574, 1000575, 1000576, 1000577, 1000578, 1000579, 1000580, 1000581, 1000582, 1000583, 1000584, 1000585, 1000586, 1000587, 1000588, 1000589, 1000590, 1000591, 1000592, 1000593, 1000594, 1000595, 1000596, 1000597, 1000598, 1000599, 1000600, 1000601, 1000602, 1000603, 1000604, 1000605, 1000606, 1000607, 1000608, 1000609, 1000610, 1000611, 1000612, 1000613, 1000614, 1000615, 1000616, 1000617, 1000618, 1000619, 1000620, 1000621, 1000622, 1000623, 1000624, 1000625, 1000626, 1000627, 1000628, 1000629, 1000630, 1000631, 1000632, 1000633, 1000634, 1000635, 1000636, 1000637, 1000638, 1000639, 1000640, 1000641, 1000642, 1000643, 1000644, 1000645, 1000646, 1000647, 1000648, 1000649, 1000650, 1000651, 1000652, 1000653, 1000654, 1000655, 1000656, 1000657, 1000658, 1000659, 1000660, 1000661, 1000662, 1000663, 1000664, 1000665, 1000666, 1000667, 1000668, 1000669, 1000670, 1000671, 1000672, 1000673, 1000674, 1000675, 1000676, 1000677, 1000678, 1000679, 1000680, 1000681, 1000682, 1000683, 1000684, 1000685, 1000686, 1000687, 1000688, 1000689, 1000690, 1000691, 1000692, 1000693, 1000694, 1000695, 1000696, 1000697, 1000698, 1000699, 1000700, 1000701, 1000702, 1000703, 1000704, 1000705, 1000706, 1000707, 1000708, 1000709, 1000710, 1000711, 1000712, 1000713, 1000714, 1000715, 1000716, 1000717, 1000718, 1000719, 1000720, 1000721, 1000722, 1000723, 1000724, 1000725, 1000726, 1000727, 1000728, 1000729, 1000730, 1000731, 1000732, 1000733, 1000734, 1000735, 1000736, 1000737, 1000738, 1000739, 1000740, 1000741, 1000742, 1000743, 1000744, 1000745, 1000746, 1000747, 1000748, 1000749, 1000750, 1000751, 1000752, 1000753, 1000754, 1000755, 1000756, 1000757, 1000758, 1000759, 1000760, 1000761, 1000762, 1000763, 1000764, 1000765, 1000766, 1000767, 1000768, 1000769, 1000770, 1000771, 1000772, 1000773, 1000774, 1000775, 1000776, 1000777, 1000778, 1000779, 1000780, 1000781, 1000782, 1000783, 1000784, 1000785, 1000786, 1000787, 1000788, 1000789, 1000790, 1000791, 1000792, 1000793, 1000794, 1000795, 1000796, 1000797, 1000798, 1000799, 1000800, 1000801, 1000802, 1000803, 1000804, 1000805, 1000806, 1000807, 1000808, 1000809, 1000810, 1000811, 1000812, 1000813, 1000814, 1000815, 1000816, 1000817, 1000818, 1000819, 1000820, 1000821, 1000822, 1000823, 1000824, 1000825, 1000826, 1000827, 1000828, 1000829, 1000830, 1000831, 1000832, 1000833, 1000834, 1000835, 1000836, 1000837, 1000838, 1000839, 1000840, 1000841, 1000842, 1000843, 1000844, 1000845, 1000846, 1000847, 1000848, 1000849, 1000850, 1000851, 1000852, 1000853, 1000854, 1000855, 1000856, 1000857, 1000858, 1000859, 1000860, 1000861, 1000862, 1000863, 1000864, 1000865, 1000866, 1000867, 1000868, 1000869, 1000870, 1000871, 1000872, 1000873, 1000874, 1000875, 1000876, 1000877, 1000878, 1000879, 1000880, 1000881, 1000882, 1000883, 1000884, 1000885, 1000886, 1000887, 1000888, 1000889, 1000890, 1000891, 1000892, 1000893, 1000894, 1000895, 1000896, 1000897, 1000898, 1000899, 1000900, 1000901, 1000902, 1000903, 1000904, 1000905, 1000906, 1000907, 1000908, 1000909, 1000910, 1000911, 1000912, 1000913, 1000914, 1000915, 1000916, 1000917, 1000918, 1000919, 1000920, 1000921, 1000922, 1000923, 1000924, 1000925, 1000926, 1000927, 1000928, 1000929, 1000930, 1000931, 1000932, 1000933, 1000934, 1000935, 1000936, 1000937, 1000938, 1000939, 1000940, 1000941, 1000942, 1000943, 1000944, 1000945, 1000946, 1000947, 1000948, 1000949, 1000950, 1000951, 1000952, 1000953, 1000954, 1000955, 1000956, 1000957, 1000958, 1000959, 1000960, 1000961, 1000962, 1000963, 1000964, 1000965, 1000966, 1000967, 1000968, 1000969, 1000970, 1000971, 1000972, 1000973, 1000974, 1000975, 1000976, 1000977, 1000978, 1000979, 1000980, 1000981, 1000982, 1000983, 1000984, 1000985, 1000986, 1000987, 1000988, 1000989, 1000990, 1000991, 1000992, 1000993, 1000994, 1000995, 1000996, 1000997, 1000998, 1000999, 1001000, 1001001, 1001002, 1001003, 1001004, 1001005, 1001006, 1001007, 1001008, 1001009, 1001010, 1001011, 1001012, 1001013, 1001014, 1001015, 1001016, 1001017, 1001018, 1001019, 1001020, 1001021, 1001022, 1001023, 1001024, 1001025, 1001026, 1001027, 1001028, 1001029, 1001030, 1001031, 1001032, 1001033, 1001034, 1001035, 1001036, 1001037, 1001038, 1001039, 1001040, 1001041, 1001042, 1001043, 1001044, 1001045, 1001046, 1001047, 1001048, 1001049, 1001050, 1001051, 1001052, 1001053, 1001054, 1001055, 1001056, 1001057, 1001058, 1001059, 1001060, 1001061, 1001062, 1001063, 1001064, 1001065, 1001066, 1001067, 1001068, 1001069, 1001070, 1001071, 1001072, 1001073, 1001074, 1001075, 1001076, 1001077, 1001078, 1001079, 1001080, 1001081, 1001082, 1001083, 1001084, 1001085, 1001086, 1001087, 1001088, 1001089, 1001090, 1001091, 1001092, 1001093, 1001094, 1001095, 1001096, 1001097, 1001098, 1001099, 1001100, 1001101, 1001102, 1001103, 1001104, 1001105, 1001106, 1001107, 1001108, 1001109, 1001110, 1001111, 1001112, 1001113, 1001114, 1001115, 1001116, 1001117, 1001118, 1001119, 1001120, 1001121, 1001122, 1001123, 1001124, 1001125, 1001126, 1001127, 1001128, 1001129, 1001130, 1001131, 1001132, 1001133, 1001134, 1001135, 1001136, 1001137, 1001138, 1001139, 1001140, 1001141, 1001142, 1001143, 1001144, 1001145, 1001146, 1001147, 1001148, 1001149, 1001150, 1001151, 1001152, 1001153, 1001154, 1001155, 1001156, 1001157, 1001158, 1001159, 1001160, 1001161, 1001162, 1001163, 1001164, 1001165, 1001166, 1001167, 1001168, 1001169, 1001170, 1001171, 1001172, 1001173, 1001174, 1001175, 1001176, 1001177, 1001178, 1001179, 1001180, 1001181, 1001182, 1001183, 1001184, 1001185, 1001186, 1001187, 1001188, 1001189, 1001190, 1001191, 1001192, 1001193, 1001194, 1001195, 1001196, 1001197, 1001198, 1001199, 1001200, 1001201, 1001202, 1001203, 1001204, 1001205, 1001206, 1001207, 1001208, 1001209, 1001210, 1001211, 1001212, 1001213, 1001214, 1001215, 1001216, 1001217, 1001218, 1001219, 1001220, 1001221, 1001222, 1001223, 1001224, 1001225, 1001226, 1001227, 1001228, 1001229, 1001230, 1001231, 1001232, 1001233, 1001234, 1001235, 1001236, 1001237, 1001238, 1001239, 1001240, 1001241, 1001242, 1001243, 1001244, 1001245, 1001246, 1001247, 1001248, 1001249, 1001250, 1001251, 1001252, 1001253, 1001254, 1001255, 1001256, 1001257, 1001258, 1001259, 1001260, 1001261, 1001262, 1001263, 1001264, 1001265, 1001266, 1001267, 1001268, 1001269, 1001270, 1001271, 1001272, 1001273, 1001274, 1001275, 1001276, 1001277, 1001278, 1001279, 1001280, 1001281, 1001282, 1001283, 1001284, 1001285, 1001286, 1001287, 1001288, 1001289, 1001290, 1001291, 1001292, 1001293, 1001294, 1001295, 1001296, 1001297, 1001298, 1001299, 1001300, 1001301, 1001302, 1001303, 1001304, 1001305, 1001306, 1001307, 1001308, 1001309, 1001310, 1001311, 1001312, 1001313, 1001314, 1001315, 1001316, 1001317, 1001318, 1001319, 1001320, 1001321, 10013



## Test Report

No. SZXEC2202967905

Date: 06 Sep 2022

Page 2 of 6

Test Result(s) :

### Test Part Description :

**Specimen No.** SN1  
**SGS Sample ID** SZX22-029679.003  
**Description** A#Beige solid material + B#Beige solid material + C#Beige solid material

### Remarks

- (1) 1 mg/kg = 1 ppm = 0.0001%
- (2) MDL = Method Detection Limit
- (3) ND = Not Detected (< MDL)
- (4) "-" = Not Regulated

**Lead, Mercury, Cadmium, Hexavalent chromium, Polybrominated biphenyls (PBBs), Polybrominated diphenyl ethers (PBDEs), Bis(2-ethylhexyl) phthalate (DEHP), Butyl benzyl phthalate (BBP), Dibutyl phthalate (DBP), and Diisobutyl phthalate (DIBP)**

Test Method: With reference to IEC 62321-4:2013+AMD1:2017, IEC62321-5:2013, IEC62321-7-2:2017, IEC 62321-6:2015 and IEC62321-8:2017, analyzed by ICP-OES, UV-Vis and GC-MS.

Test Item(s)	Limit	Unit	MDL	Q03
Cadmium (Cd)	100	mg/kg	2	ND
Lead (Pb)	1,000	mg/kg	2	ND
Mercury (Hg)	1,000	mg/kg	2	ND
Hexavalent Chromium (Cr(VI))	1,000	mg/kg	8	ND
Sum of PBBs	1,000	mg/kg	-	ND
Monobromobiphenyl	-	mg/kg	5	ND
Dibromobiphenyl	-	mg/kg	5	ND
Tribromobiphenyl	-	mg/kg	5	ND
Tetrabromobiphenyl	-	mg/kg	5	ND
Pentabromobiphenyl	-	mg/kg	5	ND
Hexabromobiphenyl	-	mg/kg	5	ND
Heptabromobiphenyl	-	mg/kg	5	ND
Octabromobiphenyl	-	mg/kg	5	ND
Nonabromobiphenyl	-	mg/kg	5	ND
Decabromobiphenyl	-	mg/kg	5	ND
Sum of PBDEs	1,000	mg/kg	-	ND
Monobromodiphenyl ether	-	mg/kg	5	ND
Dibromodiphenyl ether	-	mg/kg	5	ND
Tribromodiphenyl ether	-	mg/kg	5	ND



SGS-CEC  
Beijing

Unless otherwise agreed in writing, this document is issued by the Company subject to its General Conditions of Service printed on the reverse side of this document or accessible at <http://www.sgs.com/Service-Conditions> and, for electronic format documents, subject to the Terms and Conditions for Electronic Documents at <http://www.sgs.com/Service-Conditions>. Any holder of this document is advised that information contained herein reflects the Company's findings at the time of its intervention only and within the limits of its instructions, if any. The Company's sole responsibility is to its Client and this document does not exonerate parties to a transaction from assuming their rights and obligations under the transaction documents. This document cannot be reproduced, stored in a retrieval system, or transmitted in any form or by any means, electronic, mechanical, photocopying, recording, or by any information storage and retrieval system, without prior written approval of the Company. Any unauthorized alteration, forgery or falsification of the content or appearance of this document is unlawful and offenders may be prosecuted to the fullest extent of the law. Unless otherwise stated the results shown in this test report refer only to the sample(s) tested.

Attention: To check the authenticity of testing inspection report & certificate, please contact us at telephone: 86-21-5352-1678 or email: [CS@china.sgs.com](mailto:CS@china.sgs.com)  
SGS-CEC, Beijing, China  
Beijing

Member of the SGS Group (SGS SA)

Standard packaging includes 10 pairs in a box. Custom packaging options available to meet specific customer requirements.

## About Foshan Xuanqing Door and Window Accessories Co., Ltd.

We are a manufacturer specializing in door and window accessories, offering aluminum corner code customization, research, development, manufacturing, and sales. Our product range includes various types of corner codes, anti-fall devices, elevators, hinges, and curtain wall pendants. With over ten years of experience in the industry, we hold multiple patents and our products meet national standards. We serve both domestic and international markets, including Europe and America, with our commitment to quality, innovation, and customer satisfaction.



## SOME HONORS



宣清智连科技  
Xuanqing Zhilian Technology

Foshan Xuanqing Zhilian Technology Co., LTD

+8613827792344

fsxuanqing@gmail.com

aluminium-hardware.com

Guangdong Foshan Nanhai No. 5-1, Songgang Lianbiao Industrial Zone, Shishan Town