

## 2mm Thick Aluminium Profile Corner Connector For Window And Door Frame Joint

Our Product Introduction

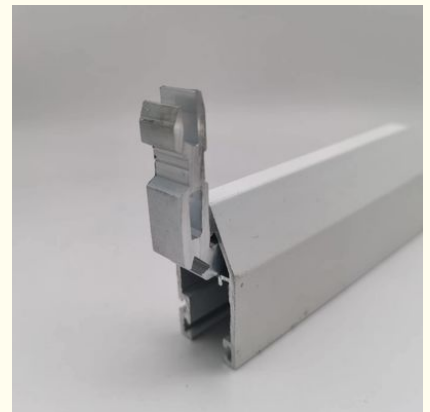
### Basic Information

- Place of Origin: China,GUA
- Brand Name: XUANQING
- Minimum Order Quantity: 500 pieces
- Price: \$0.28/pieces 500-1999 pieces
- Payment Terms: TT



### Product Specification

- Warranty: 1 Year
- After-sale Service: Online Technical Support, Onsite Training, Onsite Inspection, Free Spare Parts, Return And Replacement
- Project Solution Capability: Graphic Design, Total Solution For Projects
- Application: Hotel,home,office
- Design Style: Modern, Modern
- Type: N/M, Window Accessories
- Product Name: Aluminum Corner Joint
- Material: 6063-T5 Primary Aluminum
- Color: Primary Colors
- Usage Scenarios: Aluminum Profile Doors And Windows
- Function: Connecting The Corner Of The Door Or Window Spelling
- Feature: Durable And Solid
- Packing: Carton Box



### More Images



for more products please visit us on [aluminium-hardware.com](http://aluminium-hardware.com)

## Product Description

### 2mm Thick Aluminium Profile Corner Connector For Window And Door Frame Joint

#### Product Specifications

Attribute	Value
Warranty	1 Year
After-sale Service	Online technical support, Onsite Training, Onsite Inspection, Free spare parts, Return and Replacement
Project Solution Capability	Graphic design, total solution for projects
Application	Hotel, home, office
Material	6063-T5 primary aluminum
Usage Scenarios	Aluminum profile doors and windows
Function	Connecting the corner of the door or window spelling
Packing	Carton Box
Surface treatment	Optional aluminum surface/surface sandblasting

#### Product Description

This modern-designed aluminum profile corner connector features a 2mm thickness for enhanced strength and durability. Specifically engineered for window and door frame joints, it provides a seamless connection while maintaining an aesthetically pleasing appearance.

#### Key Features

**Premium Material:** Made from 6063-T5 primary aluminum for lightweight yet sturdy construction

**Corrosion Resistant:** Naturally resistant to rust and weathering

**Modern Design:** Enhances the visual appeal of window and door frames

**Customizable:** Supports mold customization to meet specific project requirements

#### Technical Parameters





Download Product  
Documentation

## Packaging & Delivery



Standard packaging: 500pcs/carton. Custom packaging options available upon request.  
Delivery time: Typically within 25 days after order confirmation.

## About Foshan Xuanqing Door and Window Accessories

As a specialized manufacturer of door and window accessories, we offer comprehensive solutions including custom aluminum corner connectors, injection corner codes, anti-fall devices, hinges, and curtain wall pendants. With over ten years of industry experience and multiple patented products, we serve both domestic and international markets with a commitment to quality, innovation, and customer satisfaction.



## SOME HONORS



**Foshan Xuanqing Zhilian Technology Co., LTD**

+8613827792344

fsxuanqing@gmail.com

aluminium-hardware.com

Guangdong Foshan Nanhai No. 5-1, Songgang Lianbiao Industrial Zone, Shishan Town