

Single Component Adhesive For Room Curing Aluminum Profile Corner Sealing Filling

Our Product Introduction

Basic Information

- Place of Origin: China
- Brand Name: XuanQing
- Model Number: Cotoo 1
- Minimum Order Quantity: 500PCS
- Price: Negotiable
- Packaging Details: Carton Box
- Delivery Time: 10-15 work days
- Payment Terms: T/T
- Supply Ability: 3000000pcs/mon



Product Specification

- Warranty: 1 Year
- After-sale Service: Online Technical Support, Onsite Training
- Project Solution Capability: Total Solution For Projects
- Application: Apartment, Door Window Manufacture
- Design Style: Traditional
- Type: Corner Angle Double Components Adhesives, Polyurethane Adhesive
- Product Name: Corner Angle Adhesive
- Usage: Construction
- Classification: Double Components Adhesives
- Function: Room Curing
- Morphology: Solvent Free
- Material: Polyurethane
- Characteristic: Waterproof
- Color: Light Yellow



Product Description

Single Component Adhesive For Room Curing Aluminum Profile Corner Sealing Filling

Product Specifications

Attribute	Value
Warranty	1 Year
After-sale Service	Online technical support, Onsite Training
Project Solution Capability	Total solution for projects
Application	Apartment, Door Window Manufacture
Type	Corner Angle Double Components Adhesives, polyurethane adhesive
Material	Polyurethane
Characteristic	Waterproof
Color	Light Yellow

Product Description

This single component adhesive is specifically formulated for room temperature curing in aluminum profile corner sealing and filling applications. Its easy application and effective sealing properties make it an ideal solution for enhancing the durability and appearance of aluminum profiles.

Key Features:

- Single component formulation for simplified application
- Cures at room temperature for convenient use
- Creates waterproof seals for aluminum profile corners
- Light yellow polyurethane composition
- Enhances structural integrity and aesthetic finish

TEST REPORT

No. : GZMR230400940201

Date : Apr 21, 2023

Page: 4 of 4



Equipment Information:

Equipment	Model	Equipment No.	Calibration date	Next Calibration date
Universal Testing Machine	Z030	GZMR-PL-E140	2022-06-21	2023-06-20

***** End of report*****

TEST REPORT

No. : GZMR230400940201

Date : Apr 21, 2023

Page: 3 of 4

Test Item: Tensile Lap-Shear Strength

Sample Description: Adherend

Test Method: ISO 4587:2003

Test Condition:

Shear area: $25.2 \times 14.3 \text{ mm}^2$

Testing speed: 9.0MPa/min

Number of specimens tested: 5

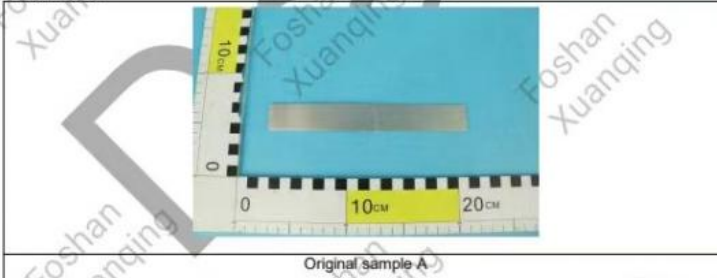
Lab Environmental Condition: $23 \pm 2^\circ\text{C}$, $50 \pm 5\% \text{ RH}$

Test Result:

Test Item	Test Result
Tensile Lap-Shear Strength	19.6MPa

Note: Failure mode: Cohesion failure.

Test Photo:



TEST REPORT

No. : GZMR230400940201

Date : Apr 21, 2023

Page: 2 of 4

Summary of Results:

No.	Test Item	Test Method	Result	Conclusion
1	Tensile Lap-Shear Strength	ISO 4587:2003	19.6MPa	/

Note:

Pass : Meet the requirements;

Fail : Does not meet the requirements;

/ : Not Apply to the judgment.

Sample photo:



SGS authenticate the photo on original report only

*** End of Report ***



Unless otherwise agreed in writing, this document is issued by the Company subject to its General Conditions of Service printed overleaf, available on request or accessible at <http://www.sgs.com/en/Terms-and-Conditions.aspx> and, for electronic format documents, subject to Terms and Conditions for Electronic Documents at <http://www.sgs.com/en/Terms-and-Conditions-Terms-Documents.aspx>. Attention is drawn to the limitation of liability and indemnification and jurisdiction issues defined therein. Any holder of this document is advised that information contained hereon reflects the Company's findings at the time of its intervention only and within the limits of the Client's instructions, if any. The Company's sole responsibility is to its Client and this document does not exonerate parties to a transaction from exercising all their rights and obligations under the transaction documents. This document cannot be reproduced, except in full, without prior written approval of the Company. Any unauthorized alteration, forgery or falsification of the content or appearance of this document is unlawful and offenders may be prosecuted to the fullest extent of the law. Unless otherwise stated the results shown in this test report refer only to the sample(s) tested.

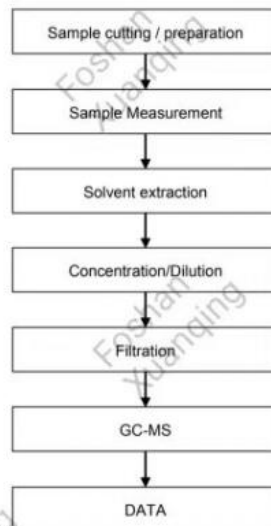
Attention: To check the authenticity of signing (inspection report & certificate), please contact us at telephone: +86-21-5327-1633 or e-mail: CR.Document@sgs.com

SGS-CTI, a joint venture between SGS SA, CHINA CO. LTD.
Shenzhen Branch, Inspection & Testing Services

Room 101-102, Part 1, Floor 10, Part 1, Block 1, Shenzhen International Trade Center, 4011, Shenzhen, Guangdong, China 518039 www.sgs.com.cn
中国广东·深圳市福田区福田街道福安社区红岭南路4011号10楼101-102 (邮编) 518039 电话: 86-755-5327-1633 sgschina@sgs.com

Member of the SGS Group (SGS SA)

Phthalates Testing Flow Chart



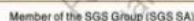
955-CE, © 2004, by The McGraw-Hill Companies, Inc. All rights reserved.
The McGraw-Hill Companies, Inc.

Online services agreed in writing, this document is issued by the Company subject to its General Conditions of Service printed separately, available on request or accessible at <http://www.saga.com/terms-and-conditions.aspx> and, for electronic formal documents, subject to Terms and Conditions for Electronic Documents at <http://www.saga.com/terms-and-conditions-Terms-Document.aspx>. Attention is drawn to the limitation of liability, indemnification and jurisdiction issues dealt with therein. Any holder of this document is deemed to have accepted the terms of the Contract of Carriage and the Conditions of Carriage of the Company and to have read and understood the Client's instructions, if any. The Company's sole responsibility is to its Client and this document does not exonerate parties to a transaction from exercising all their rights and obligations under the transaction documents. This document cannot be reproduced without the prior written authorization of the Company. Any unauthorized alteration, forgery or falsification of the content or appearance of this document is unlawful and offenders may be prosecuted to the fullest extent of the law. Unless otherwise stated the words appearing in this text refer only to the paragraph(s) in bold.

[illegible]

Pb/Cd/Hg/Cr⁶⁺/PBBs/PBDEs Testing Flow Chart

1) These samples were dissolved totally by pre-conditioning method according to below flow chart. (Cr⁶⁺ and PBBs/PBDEs test method excluded).



Unless otherwise stated, the decision rule for conformity reporting is based on Binary Statement for Simple Acceptance Rule ($w=0$) stated in ILAC-G8:09/2019.

Member of the SGS Group (SGS SA)

With multiple patented products and national quality certifications, we provide complete solutions for system doors and windows, including custom mold development. Our products meet both domestic and international standards, with exports to European and American markets.



SOME HONORS



宣清智连科技
Xuanqing Zhilian Technology

Foshan Xuanqing Zhilian Technology Co., LTD

+8613827792344

fsxuanqing@gmail.com

aluminium-hardware.com

Guangdong Foshan Nanhai No. 5-1, Songgang Lianbiao Industrial Zone, Shishan Town