

Double Components Adhesives Light Yellow PU Corner Angle Glue for Doors and Windows

Our Product Introduction

Basic Information

- Place of Origin: China
- Brand Name: XuanQing
- Model Number: Cotoo 1
- Minimum Order Quantity: 500PCS
- Price: Negotiable
- Packaging Details: Carton Box
- Delivery Time: 10-15 work days
- Payment Terms: T/T
- Supply Ability: 3000000pcs/mon



Product Specification

- Warranty: 1 Year
- After-sale Service: Online Technical Support, Onsite Training
- Project Solution Capability: Total Solution For Projects
- Application: Apartment, Door Window Manufacture
- Design Style: Traditional
- Type: Corner Angle Double Components Adhesives, Polyurethane Adhesive
- Product Name: Corner Angle Adhesive
- Usage: Construction
- Classification: Double Components Adhesives
- Function: Room Curing
- Morphology: Solvent Free
- Material: Polyurethane
- Characteristic: Waterproof
- Color: Light Yellow



More Images



for more products please visit us on aluminium-hardware.com

Product Description

Double Components Adhesives Light Yellow PU Corner Angle Glue for Doors and Windows

Product Specifications

Warranty: 1 Year

After-sale Service: Online technical support, Onsite Training

Project Solution Capability: Total solution for projects

Application: Apartment, Door Window Manufacture

Type: Corner Angle Double Components Adhesives, polyurethane adhesive

Usage: Construction

Classification: Double Components Adhesives

Function: Room Curing

Material: Polyurethane

Characteristic: Waterproof

Color: Light Yellow

Product Description

Two-component polyurethane adhesive sealant used as corner adhesive for corner connection type of doors and windows made from various materials including aluminum alloy, steel-plastic, co-extrusion, wood and aluminum composite, and aluminum-plastic composite.

Key Features

- Good thixotropy, no sagging
- Excellent adhesion to substrates
- Good heat and weather resistance
- High curing rate
- No irritant gas during curing
- Color can be adjusted

Application Instructions

- Ensure substrates are clean before application
- Insert cartridge into manual or pneumatic applicator gun
- Remove stopper and attach extrusion-type nozzle, cutting to desired shape/size
- Discard first 20cm of sealant before applying to substrates

Important Notice: Replace mixing head if sealant application is paused for more than 20 minutes to ensure proper flow.

Product Images

TEST REPORT

No. : GZMR230400940201

Date : Apr 21, 2023

Page: 4 of 4



Equipment Information:

Equipment	Model	Equipment No.	Calibration date	Next Calibration date
Universal Testing Machine	Z030	GZMR-PL-E140	2022-06-21	2023-06-20

***** End of report*****

TEST REPORT

No. : GZMR230400940201

Date : Apr 21, 2023

Page: 3 of 4

Test Item: Tensile Lap-Shear Strength

Sample Description: Adherend

Test Method: ISO 4587:2003

Test Condition:

Shear area: $25.2 \times 14.3 \text{ mm}^2$

Testing speed: 9.0MPa/min

Number of specimens tested: 5

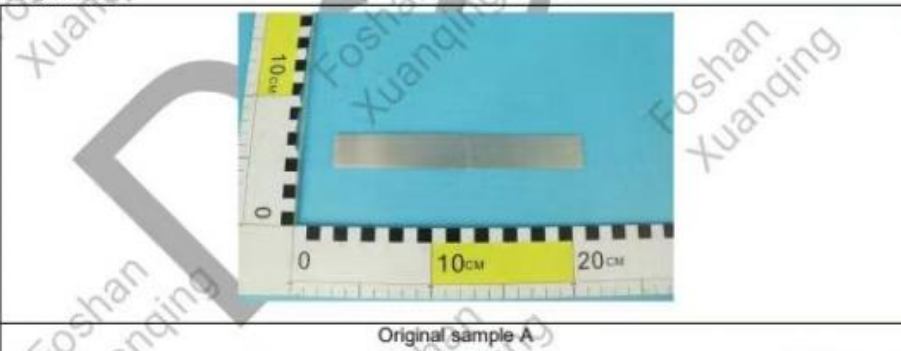
Lab Environmental Condition: $23 \pm 2 \text{ }^\circ\text{C}$, $50 \pm 5 \text{ \% RH}$

Test Result:

Test Item	Test Result
Tensile Lap-Shear Strength	19.6MPa

Note: Failure mode: Cohesion failure.

Test Photo:



TEST REPORT

No. : GZMR230400940201

Date : Apr 21, 2023

Page: 2 of 4

Summary of Results:

No.	Test Item	Test Method	Result	Conclusion
1	Tensile Lap-Shear Strength	ISO 4587:2003	19.6MPa	/

Note:

Pass : Meet the requirements;

Fail : Does not meet the requirements;

/ : Not Apply to the judgment.

Test Report

No. SZXEC2202967905

Date: 06 Sep 2022

Page 6 of 6

Sample photo:



SGS authenticate the photo on original report only

*** End of Report ***



Unless otherwise agreed in writing, this document is issued by the Company subject to its General Conditions of Service printed overleaf, available on request or accessible at <http://www.sgs.com/en/Terms-and-Conditions.aspx> and, for electronic format documents, subject to Terms and Conditions for Electronic Documents at <http://www.sgs.com/en/Terms-and-Conditions/Terms-e-Document.aspx>. Attention is drawn to the limitation of liability, indemnification and jurisdiction issues defined therein. Any holder of this document is advised that information contained hereon reflects the Company's findings at the time of its intervention only and within the limits of Client's instructions, if any. The Company's sole responsibility is to its Client and this document does not exonerate parties to a transaction from exercising all their rights and obligations under the transaction documents. This document cannot be reproduced except in full, without prior written approval of the Company. Any unauthorized alteration, forgery or falsification of the content or appearance of this document is unlawful and offenders may be prosecuted to the fullest extent of the law. Unless otherwise stated the results shown in this test report refer only to the part(s) tested.

Attention: To check the authenticity of testing inspection report & certificate, please contact us at telephone: +86 (755) 833271423, or email: CN.Deecheek@sgs.com

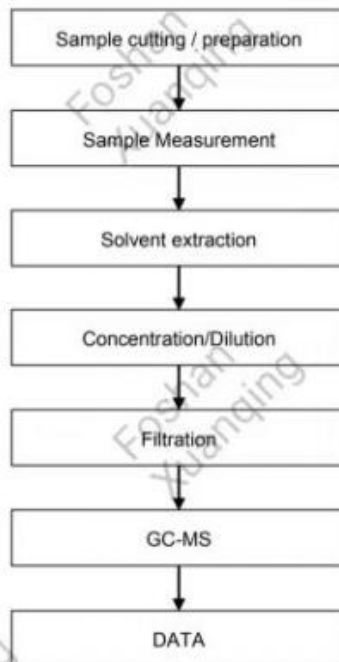
Room 101-107, Part 4, Room 101, Part 10 Room 101-107, Part 1, Jiaogang (Shenzhen) Industrial Park, No. 438, Jiaogang Road, Shantou Community, Longgang District, Shenzhen, Guangdong, China 518129 www.sgs.com.cn

中国·广东·深圳市福田区梅林街道社区中环路438号工业园 (楼层) 工业园101-107, 240101, 240101, 240101-107 邮编: 518129 106-7106 23255000 sgs.cn@sgs.com

Member of the SGS Group (SGS SA)

ATTACHMENTS

Phthalates Testing Flow Chart



Unless otherwise agreed in writing, this document is issued by the Company subject to its General Conditions of Service printed overleaf, available on request or accessible at <http://www.sgs.com/en/Terms-and-Conditions.aspx> and, for electronic format documents, subject to Terms and Conditions for Electronic Documents at <http://www.sgs.com/en/Terms-and-Conditions/Terms-e-Documents.aspx>. Attention is drawn to the limitation of liability, indemnification and jurisdiction issues defined therein. Any holder of this document is advised that information contained hereon reflects the Company's findings, at the time of its intervention only and within the limits of Client's instructions, if any. The Company's sole responsibility is to its Client and this document does not exonerate parties to a transaction from exercising all their rights and obligations under the transaction documents. This document cannot be reproduced except in full, without prior written approval of the Company. Any unauthorized alteration, forgery or falsification of the content or appearance of this document is unlawful and offenders may be prosecuted to the fullest extent of the law. Unless otherwise stated the results shown in this test report refer only to the part(s) tested.

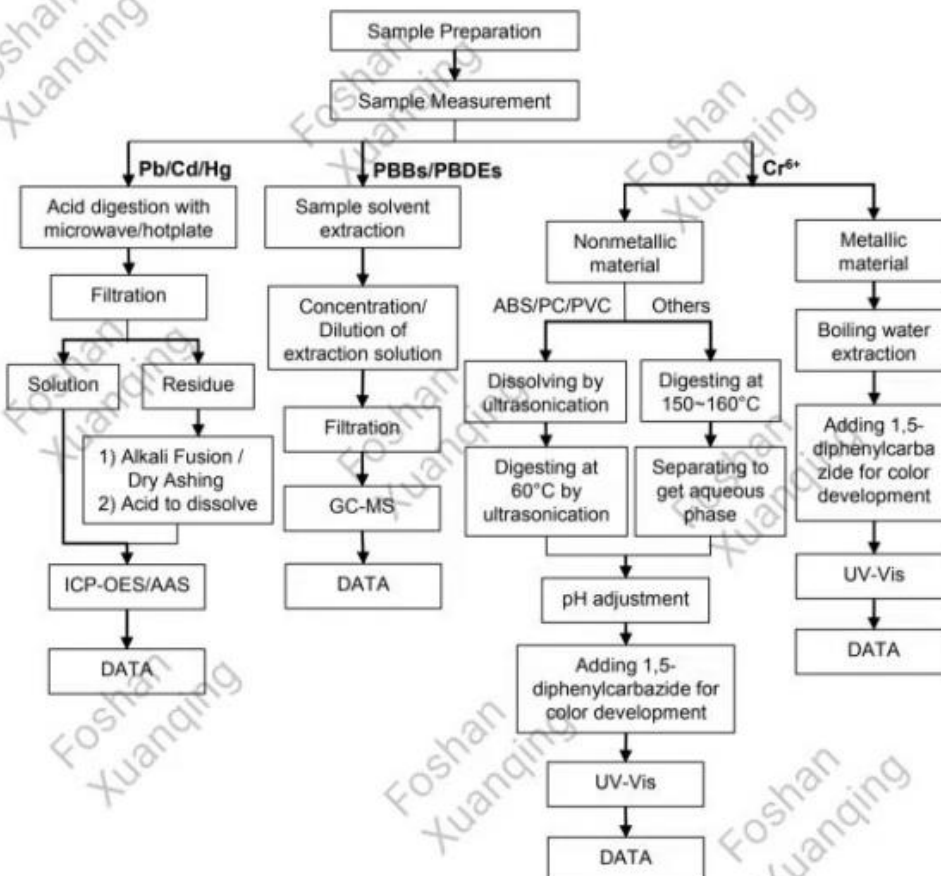
Attention: To check the authenticity of testing / inspection report & certificate, please contact us at telephone: +86 (0)20 823071423, or email: CN.Check@sgs.com

SGS-Client Service Center (Technical) Co., Ltd.
 Room 101-107, Part 4 Room 101, Part 10 Room 101-107, Part 1, Jiaogan (Donghai) Industrial Park, No. 438, Jiaogan Road, Bantian Community, Bantian Street, Longgang District, Shenzhen, Guangdong, China 518129 www.sgs.com.cn
 中国·广东·深圳龙岗区坂田街道社区居委会438号工业园（东环）工业厂房101-107、2号101、3号101、4号101-107 邮编: 518129 106-7196 22325553 npr.china@sgs.com

ATTACHMENTS

Pb/Cd/Hg/Cr⁶⁺/PBBs/PBDEs Testing Flow Chart

1) These samples were dissolved totally by pre-conditioning method according to below flow chart.
(Cr⁶⁺ and PBBs/PBDEs test method excluded).



Unless otherwise agreed in writing, this document is issued by the Company subject to its General Conditions of Service printed overleaf, available on request or accessible at <http://www.sgs.com/en/Terms-and-Conditions.aspx> and, for electronic format documents, subject to Terms and Conditions for Electronic Documents at <http://www.sgs.com/en/Terms-and-Conditions/Terms-e-Documents.aspx>. Attention is drawn to the limitation of liability, indemnification and jurisdiction issues defined therein. Any holder of this document is advised that information contained hereon reflects the Company's findings at the time of its intervention only and within the limits of Client's instructions, if any. The Company's sole responsibility is to its Client and this document does not exonerate parties to a transaction from exercising all their rights and obligations under the transaction documents. This document cannot be reproduced except in full, without prior written approval of the Company. Any unauthorized alteration, forgery or falsification of the content or appearance of this document is unlawful and offenders may be prosecuted to the fullest extent of the law. Unless otherwise stated the results shown in this test report refer only to the part(s) tested.

Attention: To check the authenticity of testing/inspection report & certificate, please contact us at telephone: +86 (755) 8337 5443, or email: CN_Doccheck@sgs.com

SGS-Client Service Center (P) Ltd.
Incorporated in the Republic of Singapore
Raffles Place, 4th Floor, 10, Raffles Place, Singapore 048615
Tel: +65 6339 1000, Fax: +65 6339 1001, Email: sgs@sgs.com.sg
www.sgs.com.sg

Test Report

No. SZXEC2202967905

Date, 06 Sep 2022

Page 3 of 6

Test Item(s)	Limit	Unit	MDL	003
Tetrabromodiphenyl ether	-	mg/kg	5	ND
Pentabromodiphenyl ether	-	mg/kg	5	ND
Hexabromodiphenyl ether	-	mg/kg	5	ND
Heptabromodiphenyl ether	-	mg/kg	5	ND
Octabromodiphenyl ether	-	mg/kg	5	ND
Nonabromodiphenyl ether	-	mg/kg	5	ND
Decabromodiphenyl ether	-	mg/kg	5	ND
Dibutyl Phthalate (DBP)	1000	mg/kg	50	ND
Butyl benzyl Phthalate (BBP)	1000	mg/kg	50	ND
Bis(2-ethylhexyl) Phthalate (DEHP)	1000	mg/kg	50	ND
Diisobutyl Phthalate (DIBP)	1000	mg/kg	50	ND

Remark1: The sample(s) was/were analyzed on behalf of the applicant as mixing sample in one testing. The above result(s) was/were only given as the informality value and only for reference.

Remark2: The limit(s) was/were submitted by applicant.

Unless otherwise stated, the decision rule for conformity reporting is based on Binary Statement for Simple Acceptance Rule (w=0) stated in ILAC-G8:09/2019.



Unless otherwise agreed in writing, this document is issued by the Company subject to its General Conditions of Service printed overleaf, available on request or accessible at <http://www.sgs.com/en/Terms-and-Conditions.aspx> and, for electronic format documents, subject to Terms and Conditions for Electronic Documents at <http://www.sgs.com/en/Terms-and-Conditions/Terms-e-Document.aspx>. Attention is drawn to the limitation of liability, indemnification and jurisdiction issues defined therein. Any holder of this document is advised that information contained hereon reflects the Company's findings at the time of its intervention only and within the limits of Client's instructions, if any. The Company's sole responsibility is to its Client and this document does not exonerate parties to a transaction from exercising all their rights and obligations under the transaction documents. This document cannot be reproduced except in full, without prior written approval of the Company. Any unauthorized alteration, forgery or falsification of the content or appearance of this document is unlawful and offenders may be prosecuted to the fullest extent of the law. Unless otherwise stated the results shown in this test report refer only to the part(s) tested.

Attention: To check the authenticity of testing (inspection) report & certificate, please contact us at telephone: +86 755 8102 1443, or email: CN.Doccheck@sgs.com

SGS-CHINA Inspection & Testing Services Co., Ltd.
 Room 101-107, Part 4 Room 107, Part 10 Room 107-107, Part 1, Jiaogang (Shenzhen) Industrial Park, No. 438, Jiaogang Road, Shennan Community, Shennan Street, Longgang District, Shenzhen, Guangdong, China 518129 www.sgs.com
 中国·广东·深圳市福田区梅林街道梅康社区中康路438号工业园(部分)工业厂房101-107、2#101、3#101-107 邮编: 518129 105-7156/22355553 sgs.doccheck@sgs.com



Test Report

No. SZXEC2202967905

Date, 06 Sep 2022

Page 2 of 6

Test Result(s) :

Test Part Description :

Specimen No.	SGS Sample ID	Description
SN1	SZX22-029679.003	A#Beige solid material + B#Beige solid material + C#Beige solid material

Remarks:

- (1) 1 mg/kg = 1 ppm = 0.0001%
- (2) MDL = Method Detection Limit
- (3) ND = Not Detected (< MDL)
- (4) "-" = Not Regulated

Lead, Mercury, Cadmium, Hexavalent chromium, Polybrominated biphenyls (PBBs), Polybrominated diphenyl ethers (PBDEs), Bis(2-ethylhexyl) phthalate (DEHP), Butyl benzyl phthalate (BBP), Dibutyl phthalate (DBP) and Diisobutyl phthalate (DIBP)

Test Method: With reference to IEC 62321-4:2013+AMD1:2017, IEC62321-5:2013, IEC62321-7-2:2017, IEC 62321-6:2015 and IEC62321-8:2017, analyzed by ICP-OES, UV-Vis and GC-MS.

Test Item(s)	Limit	Unit	MDL	Q23
Cadmium (Cd)	100	mg/kg	2	ND
Lead (Pb)	1,000	mg/kg	2	ND
Mercury (Hg)	1,000	mg/kg	2	ND
Hexavalent Chromium (Cr(VI))	1,000	mg/kg	8	ND
Sum of PBBs	1,000	mg/kg	-	ND
Monobromobiphenyl	-	mg/kg	5	ND
Dibromobiphenyl	-	mg/kg	5	ND
Tribromobiphenyl	-	mg/kg	5	ND
Tetrabromobiphenyl	-	mg/kg	5	ND
Pentabromobiphenyl	-	mg/kg	5	ND
Hexabromobiphenyl	-	mg/kg	5	ND
Heptabromobiphenyl	-	mg/kg	5	ND
Octabromobiphenyl	-	mg/kg	5	ND
Nonabromobiphenyl	-	mg/kg	5	ND
Decabromobiphenyl	-	mg/kg	5	ND
Sum of PBDEs	1,000	mg/kg	-	ND
Monobromodiphenyl ether	-	mg/kg	5	ND
Dibromodiphenyl ether	-	mg/kg	5	ND
Tribromodiphenyl ether	-	mg/kg	5	ND



Unless otherwise agreed in writing, this document is issued by the Company subject to its General Conditions of Service printed overleaf, available on request or accessible at <http://www.sgs.com/en/Terms-and-Conditions.aspx> and, for electronic format documents, subject to Terms and Conditions for Electronic Documents at <http://www.sgs.com/en/Terms-and-Conditions/Terms-e-Documents.aspx>. Attention is drawn to the limitation of liability, indemnification and jurisdiction issues defined therein. Any holder of this document is advised that information contained hereon reflects the Company's findings at the time of its intervention only and within the limits of Client's instructions, if any. The Company's sole responsibility is to its Client and this document does not exonerate parties to a transaction from exercising all their rights and obligations under the transaction documents. This document cannot be reproduced except in full, without prior written approval of the Company. Any unauthorized alteration, forgery or falsification of the content or appearance of this document is unlawful and offenders may be prosecuted to the fullest extent of the law. Unless otherwise stated the results shown in this test report refer only to the part(s) tested.

Attention: To check the authenticity of testing inspection report & certificate, please contact us at telephone: +86 (755) 8332 1443, or email: CN.Doccheck@sgs.com

Room 101-107, Plant 4 Room 101, Plant 10 Room 301-307, Plant 3, Jiaogang (Donghai) Industrial Park, No. 428, Jiaogang Road, Bantian Community, Bantian Street, Lingyuan District, Shenzhen, Guangdong, China 518129 www.sgs.com.cn
中国·广东·深圳市宝安区沙井街道沙井社区中沙路43号工业园(东海)工业厂房101-107、20101、30101、30102-30107 邮编: 518129 106-7166 21235500 sgs.doccheck@sgs.com

Member of the SGS Group (SGS SA)



宣清智连科技
Xuanqing Zhilian Technology

Foshan Xuanqing Zhilian Technology Co., LTD



+8613827792344



fsxuanqing@gmail.com



aluminium-hardware.com

Guangdong Foshan Nanhai No. 5-1, Songgang Lianbiao Industrial Zone, Shishan Town